



INO
ISTITUTO NAZIONALE
DI OTTICA



Disordered photonics

LENS, Univ. Firenze, INO-CNR, Sesto Fiorentino

www.lens.unifi.it

Diederik S. Wiersma

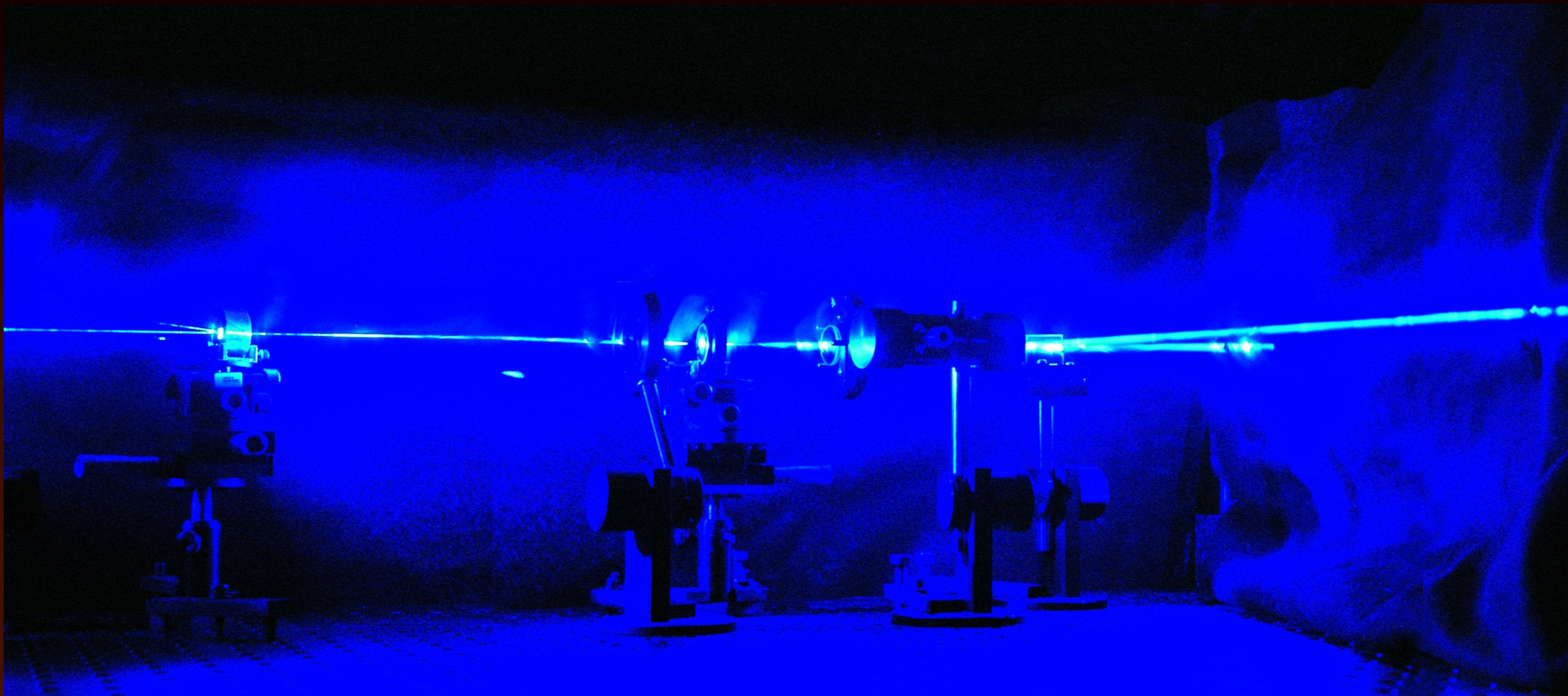
Lorenzo Cortese
Chih Hua Ho
Daniele Martella
Sara Nocentini
Dmitry Nuzhdin
Camilla Parmeggiani
Lorenzo Patelli
Francesco Utel
Anjani Kumar Tiwari
Hao Zeng

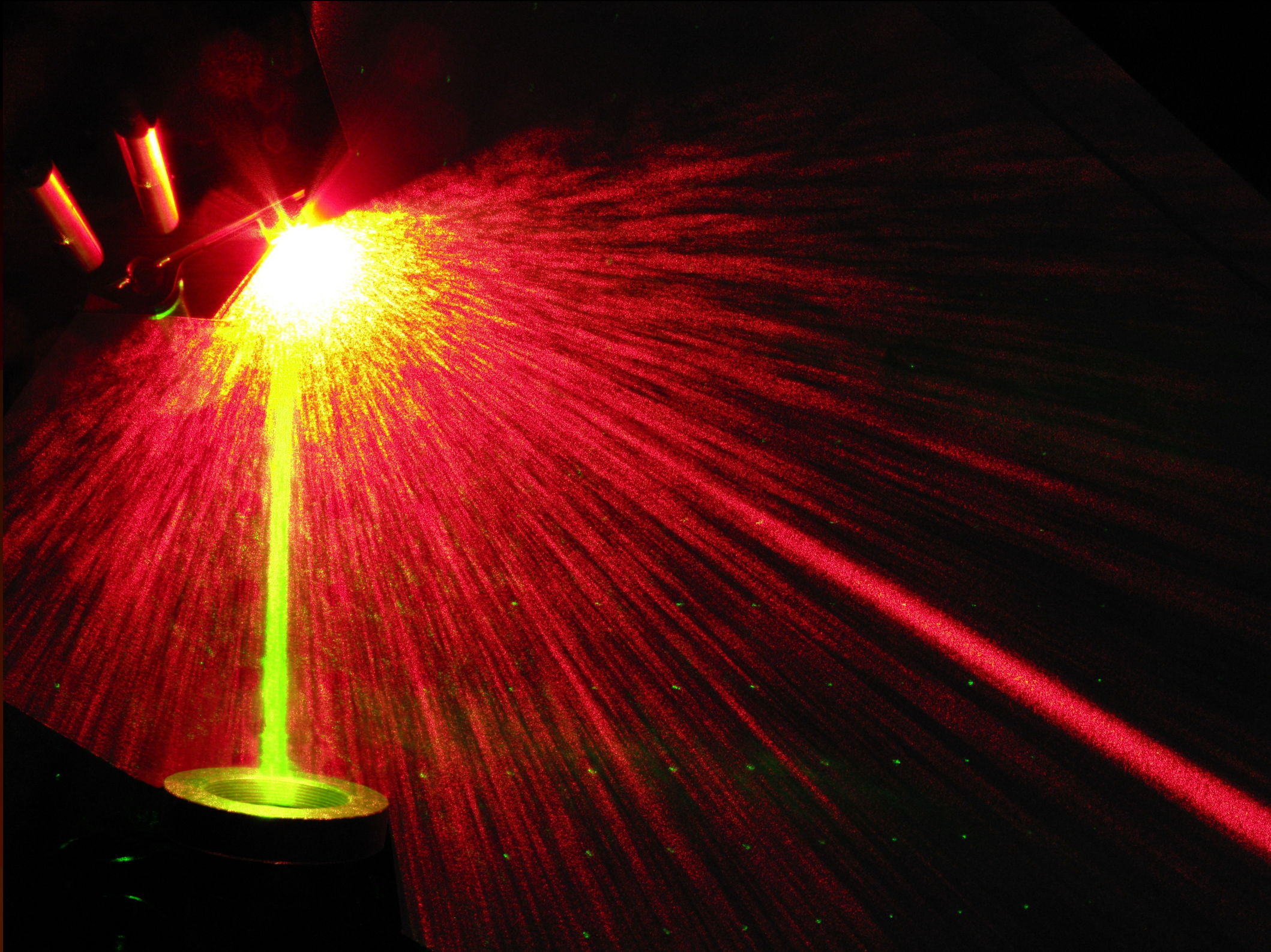
Matteo Burrelli
Piotr Wasylczyk

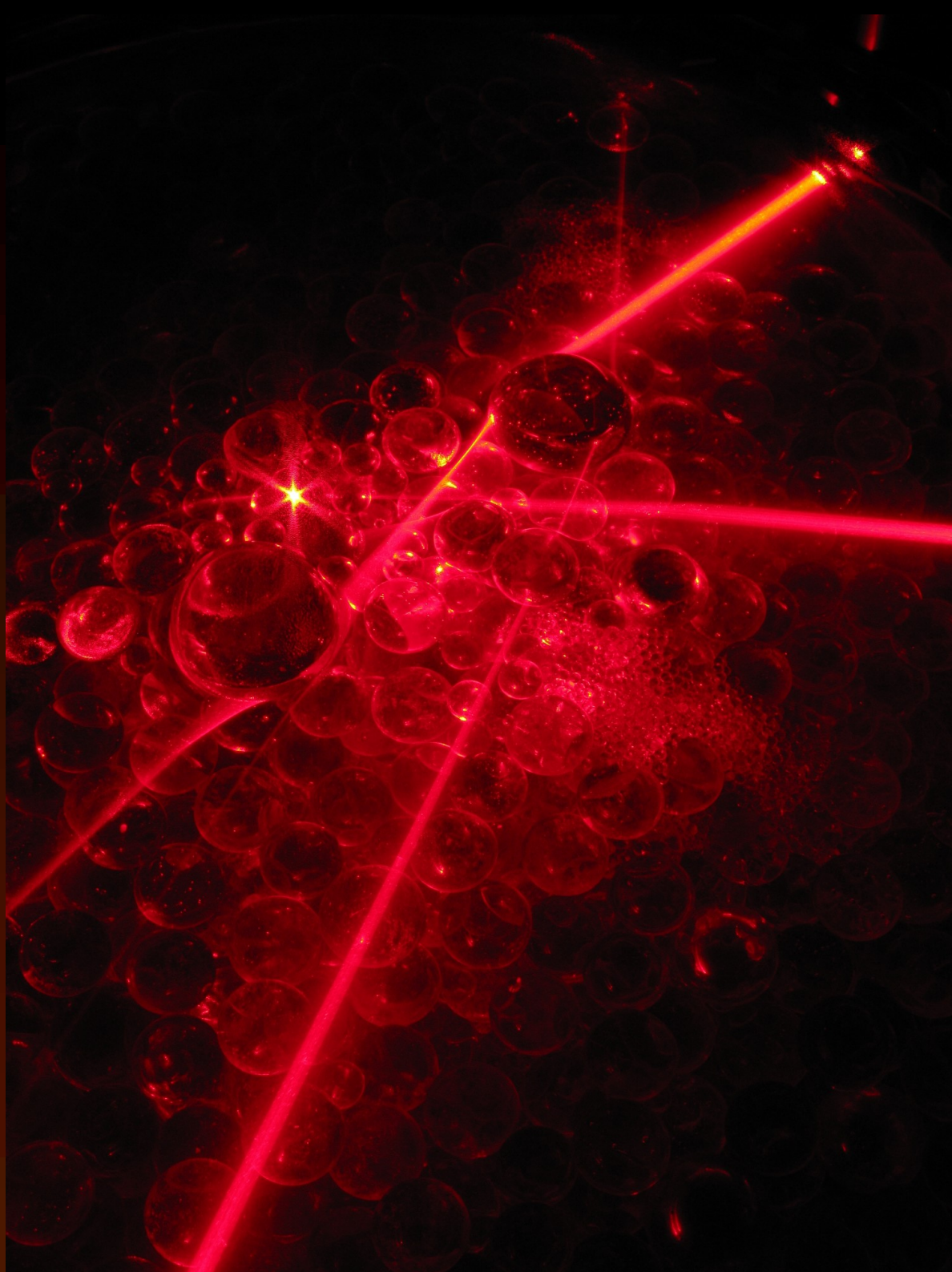
Jacopo Berlototti
Romolo Savo
Tomas Svensson
Silvia Vignolini
Kevin Vynck
Sepideh Zakeri

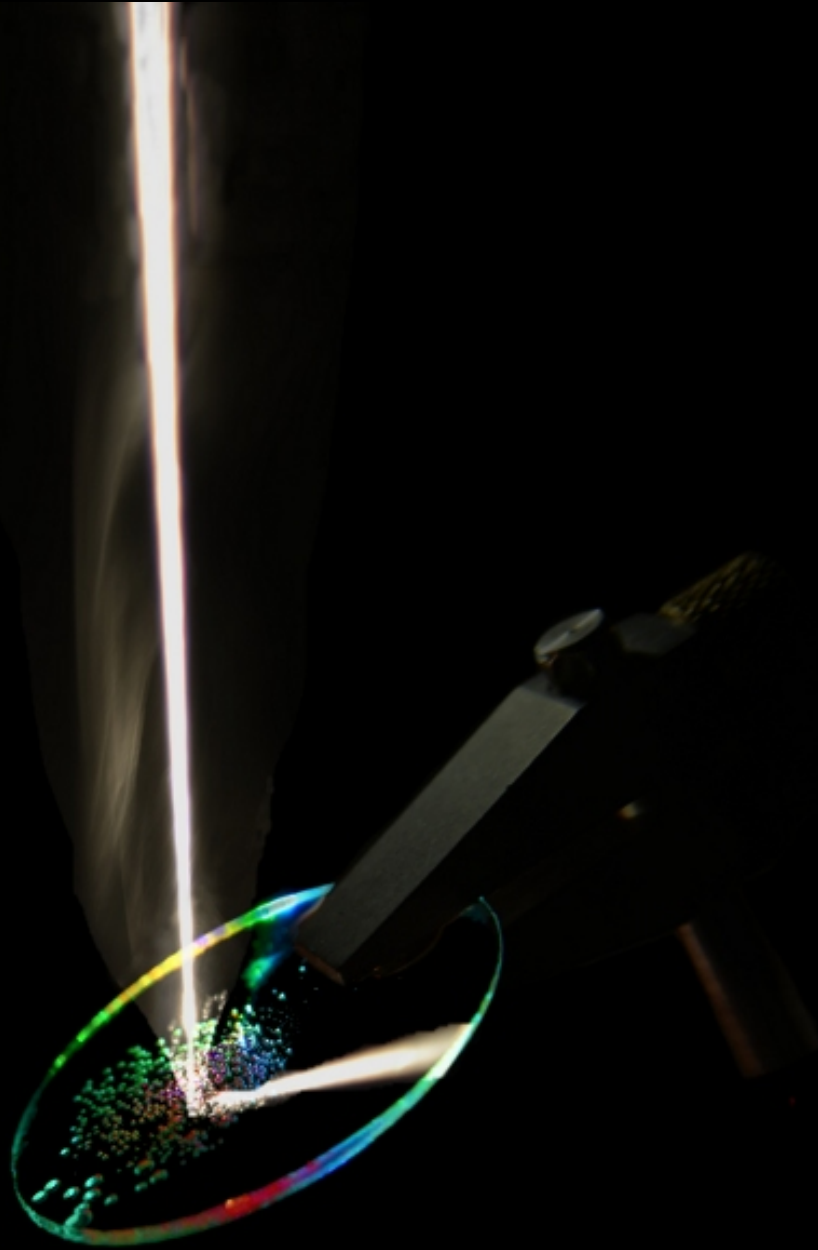
Costanza Toninelli
Massimo Gurioli
Francesca Intonti
Stefano Cavalieri
Stefano Lepri







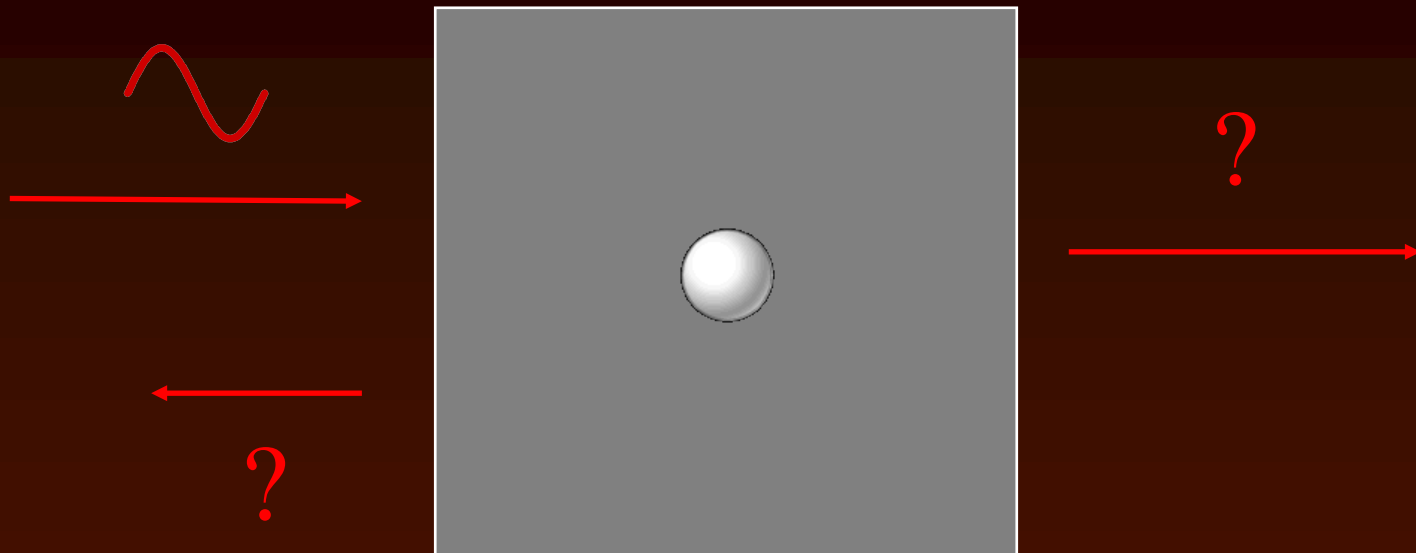




Understanding light propagation

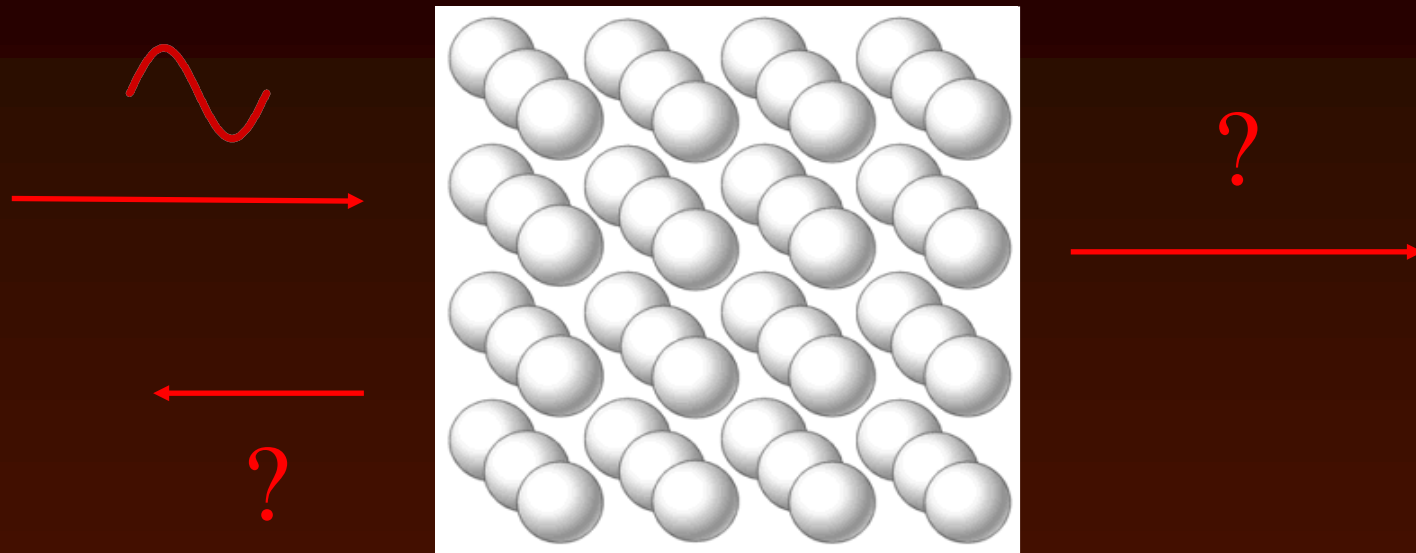


Light propagation



Single scattering

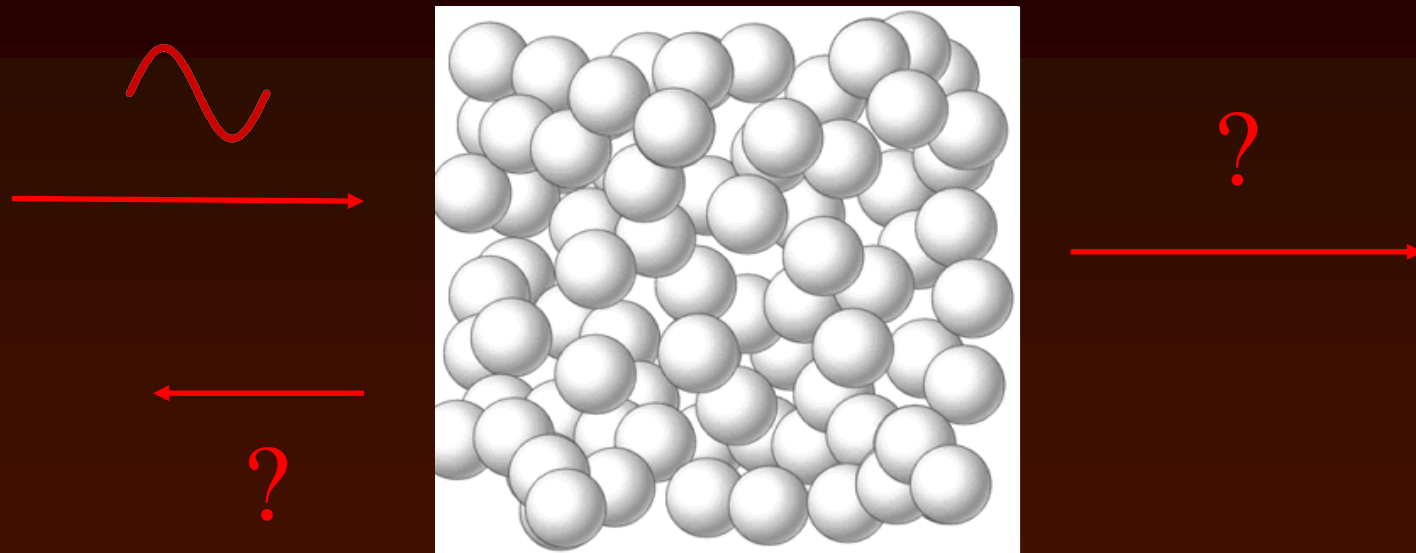
Light propagation



Photonic crystal



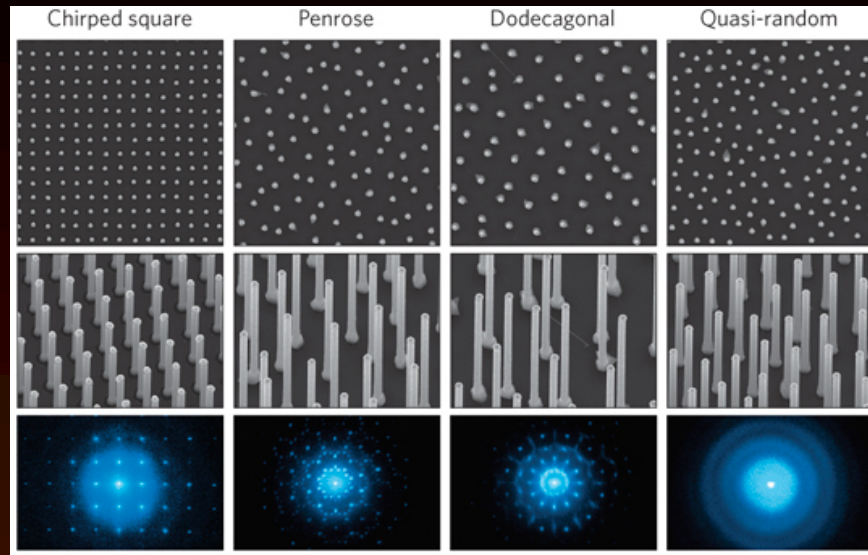
Light propagation



Photonic glass



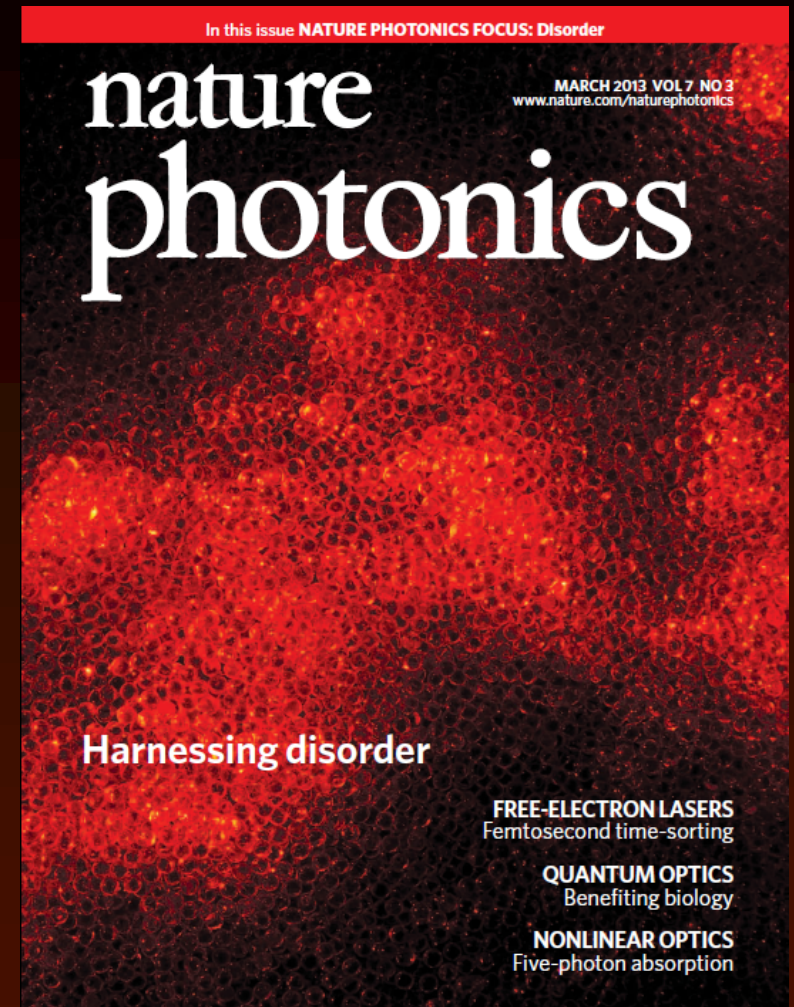
Photon management



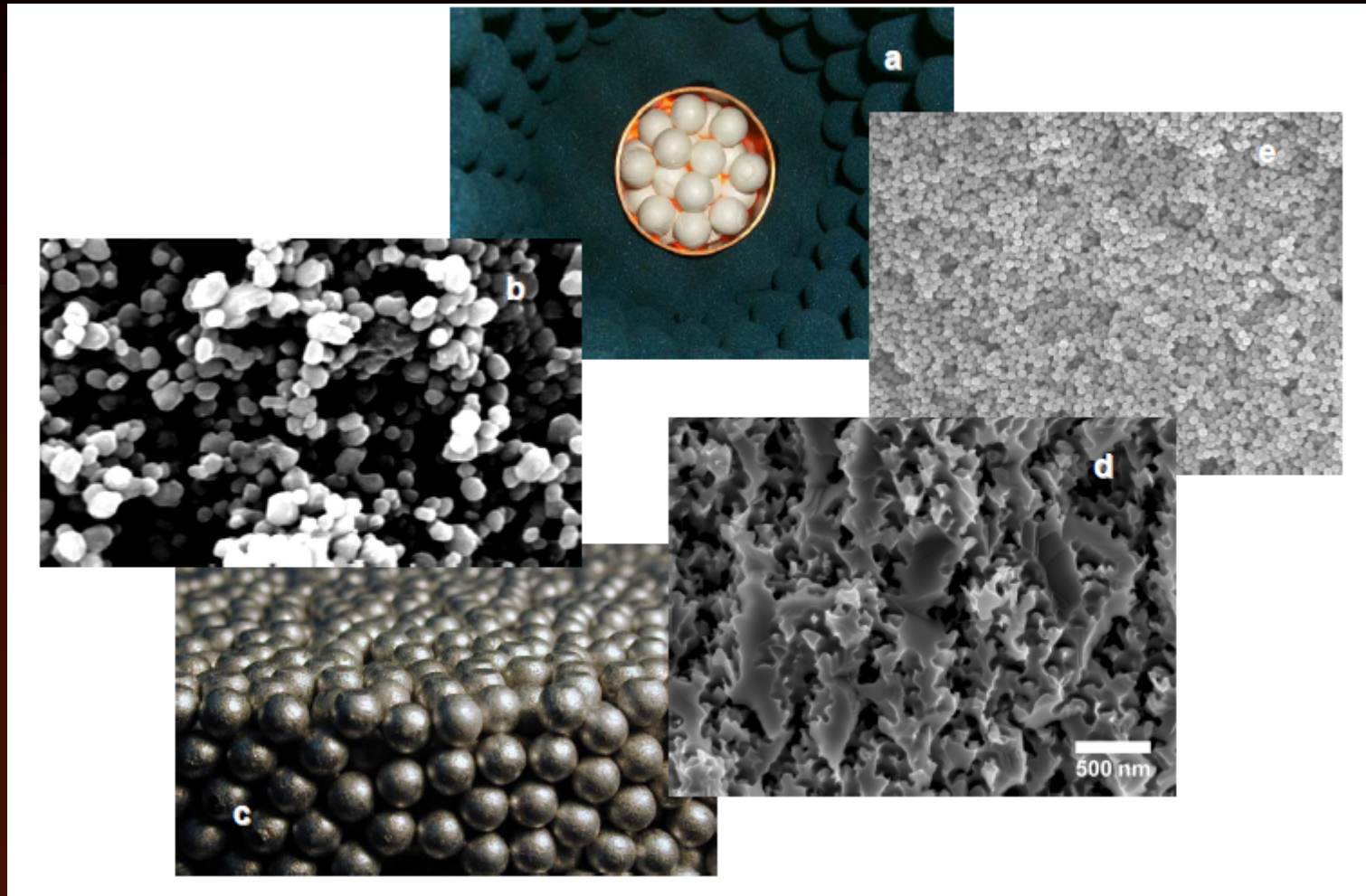
H. Atwater, Caltech.



S. Vignolini, Cambridge University.



Nature Photonics, March 2013.





	l_t (μm)	D (m^2s^{-1})	OT	OT_n (g^{-1}m^2)
<i>Cyphochilus</i>	1.47 ± 0.07	120 ± 6	5.5	0.78
<i>L. stigma</i>	2.1 ± 0.1	180 ± 9	6.5	0.66
Paper	13 ± 0.65	1100 ± 55	8.7	0.09
Syringe filter	6 ± 0.3	480 ± 24	26.6	0.33
Photonic Glass ³⁰	2.9	190	17	0.58

a



a



